

Friends of Starkweather Creek



Annual Membership Meeting
October 19, 2017

Annual Activities

FUN

- Clean ups
- Canoe tours
- Education
- Solstice Bonfires

SCIENCE

- Monitoring
- Engineering
- Testing



Confluence of East and West
Branches

BOATS





Boats

- Go Fund Me
- Raised \$800 towards rent and construction
- Signed agreement March 17th
- Installed by April 29th
- 250+ tour attendees this summer

Rutabaga



Family Night Goodman Center on March 9th



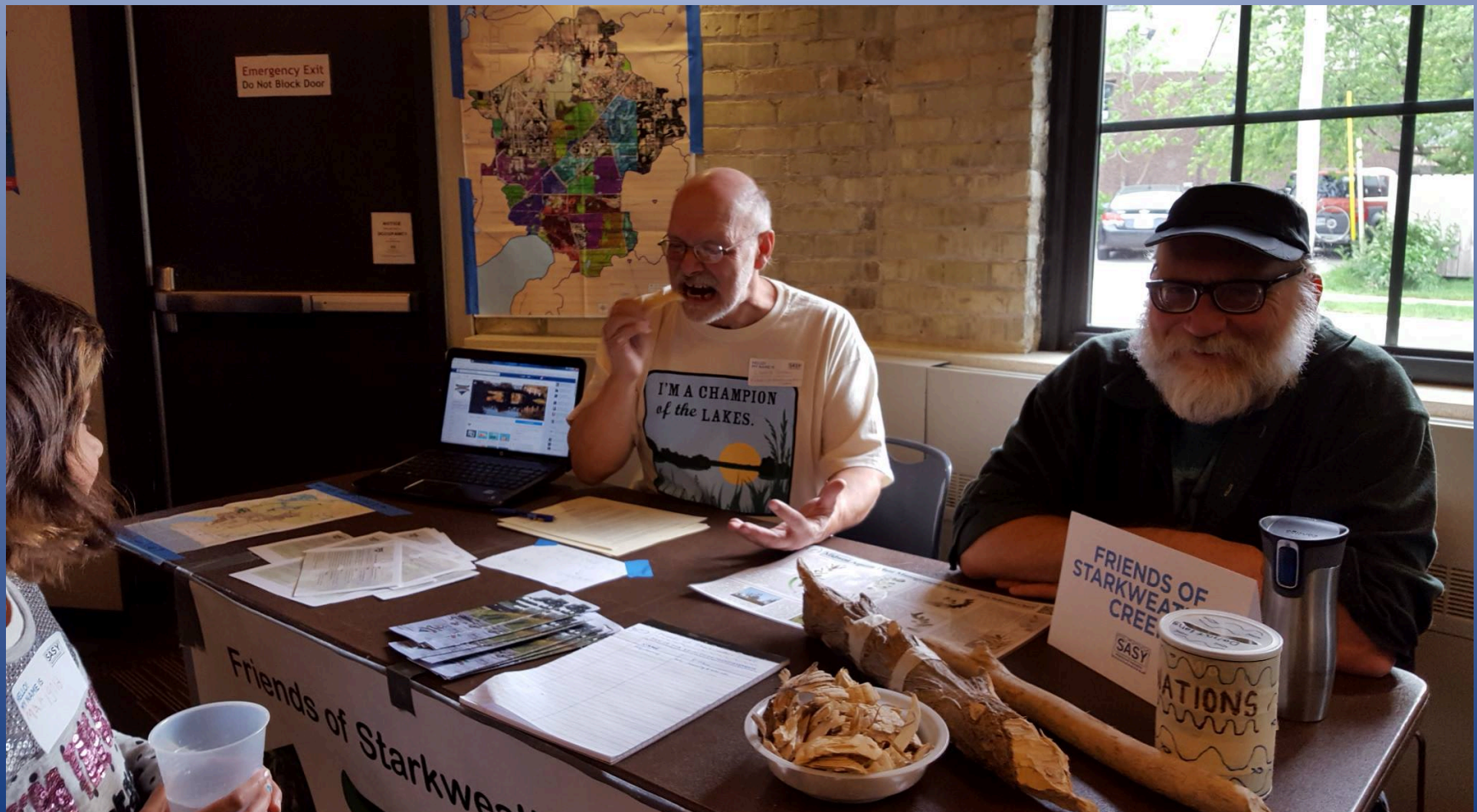
Earth Day Cleanup with Goodman Center April 22nd



Friends Clean Up April 29th



May 19th SASY Table



Summer Solstice











Winter Solstice Join Us December 21st!



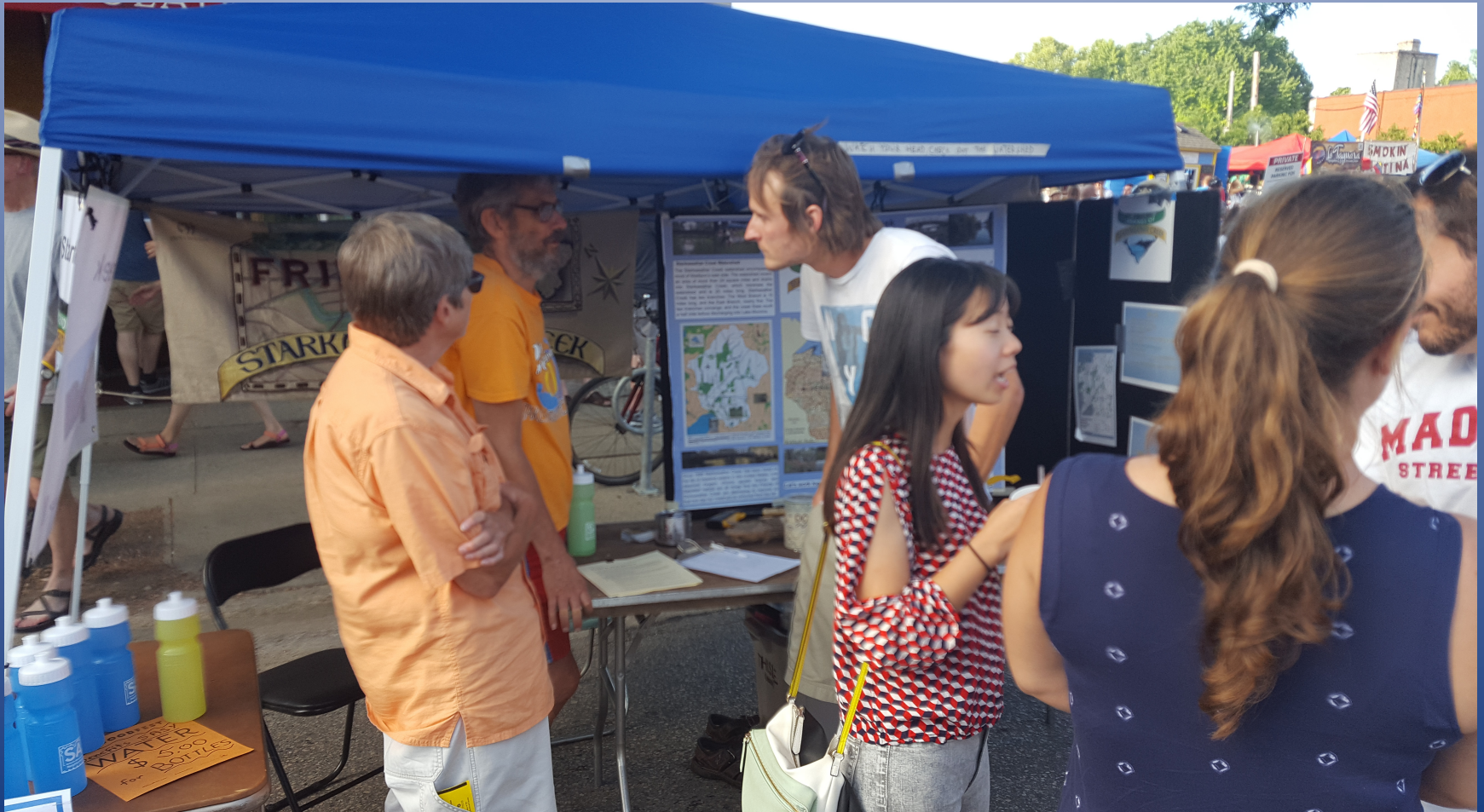
Education at Atwood Fest

July 29-30



Eken Park Education

August 19th



Clean Lakes Alliance UW Madison Creek Tour May 9th





Invasive Plant Removal





Goodman Summer Camp on Starkweather





Watershed Wanderers





Planting





Canoeing



Monitoring



Clarity Reading

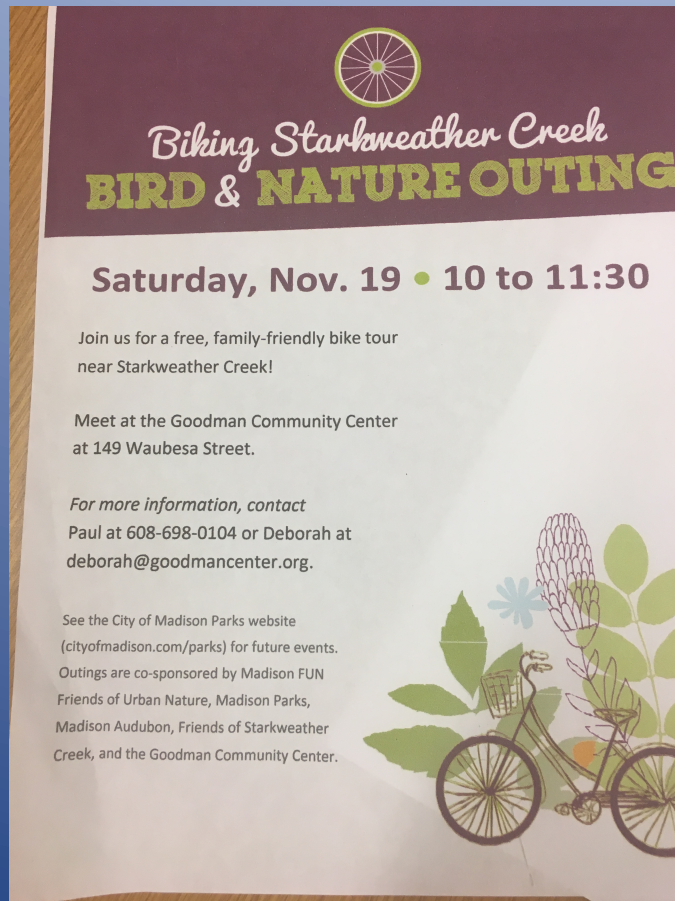


Boating





Madison FUN Bird and Nature Walks



- Free, Family-friendly Bird and Nature Outings



A FUN Approach to Nature Education for Families and Kids

Madison, Wisconsin is a national leader in getting
Children in Nature.

Part of that success is FUN - Friends of Urban
Nature, a coalition of Parks, Schools Environmental
and Friends groups that co-sponsor regular
opportunities for families and kids to enjoy Nature
Recreation and Nature Education in nearby Natural
Areas

Madison FUN Tours







Fall Canoe Tour













Helping the Creek Newsletter



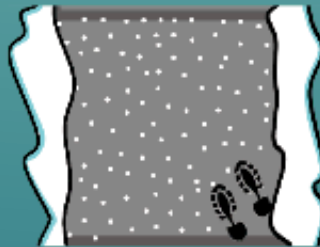
Once you put salt down, it doesn't go away. It washes off surfaces and accumulates in local lakes, streams and drinking water. You can keep sidewalks and driveways safe this winter while protecting our waters by following these simple steps:

1. Shovel



Clear walkways and other areas before the snow turns to ice. The more snow you remove manually, the less salt you will have to use and the more effective it will be.

2. Scatter



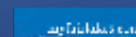
If you apply salt to pavement, aim for a pattern like this, leaving space between salt grains. A coffee mug full of salt is enough for about 60-70 feet of sidewalk. A hand spreader can help create this pattern.

3. Switch



When the pavement temperature is below 15 degrees, salt won't work. Switch to a different ice melter (like a blend) that works at a lower temperature, or use sand for traction.

Brought to you by the WI Salt Wise partnership:



Leaves!

Rake them out of the street

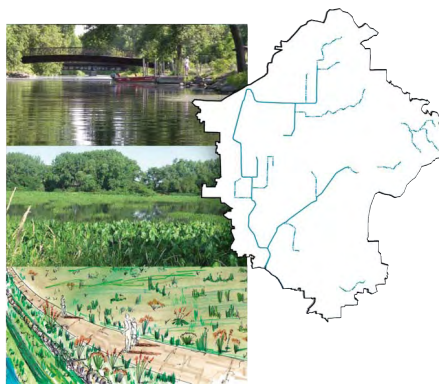


Science on the Creek



Starkweather Creek Watershed: *Current Conditions and Improvement Strategies in an Urban Context*

2006

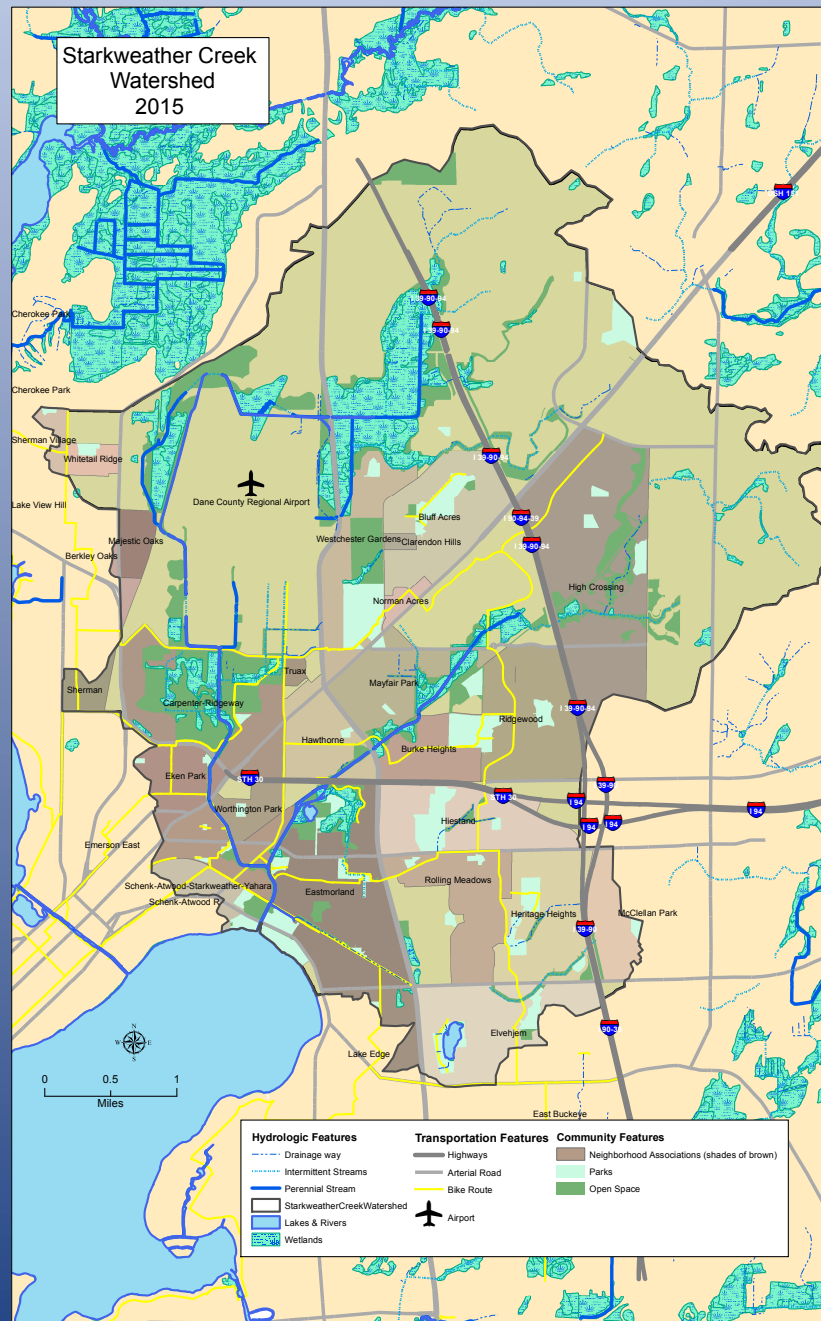


WATER RESOURCES MANAGEMENT PRACTICUM 2005
NELSON INSTITUTE FOR ENVIRONMENTAL STUDIES
UNIVERSITY OF WISCONSIN-MADISON



Watershed

- 24 Square Miles
- Largest in Madison
- Two Branches
- Low baseflow
- Channelized, degraded wetlands
- 16,500 lbs P per year to Monona





Starkweather Treatment System

Enhanced Phosphorus Removal from Stormwater

- - One Approach to TMDL Compliance

August 4, 2015



Greg Fries, PE
City of Madison
Engineering Dept.

Jim Bachhuber, PH
Brown and Caldwell
Madison, WI



Rain Garden Planting







Native Plant Seeding



Dane County Red Training and Canoe Trip on September 9th







Update on Starkweather Treatment System



- Feasibility study for Starkweather Creek complete
- \$390 cost per pound of phosphorus per year
- Relocation order process for the land approved by Board of Public Works and the Common Council
- Process will take 6-12 months
- Board of Public Works considered an addendum to Brown and Caldwell's contract for about \$935,000. This addendum will cover, broadly, final design of the system and inspection services during construction.



DNR Sediment Testing





Sample Sites



Figure 1. Starkweather Creek Watershed sediment sample sites.

Test Results

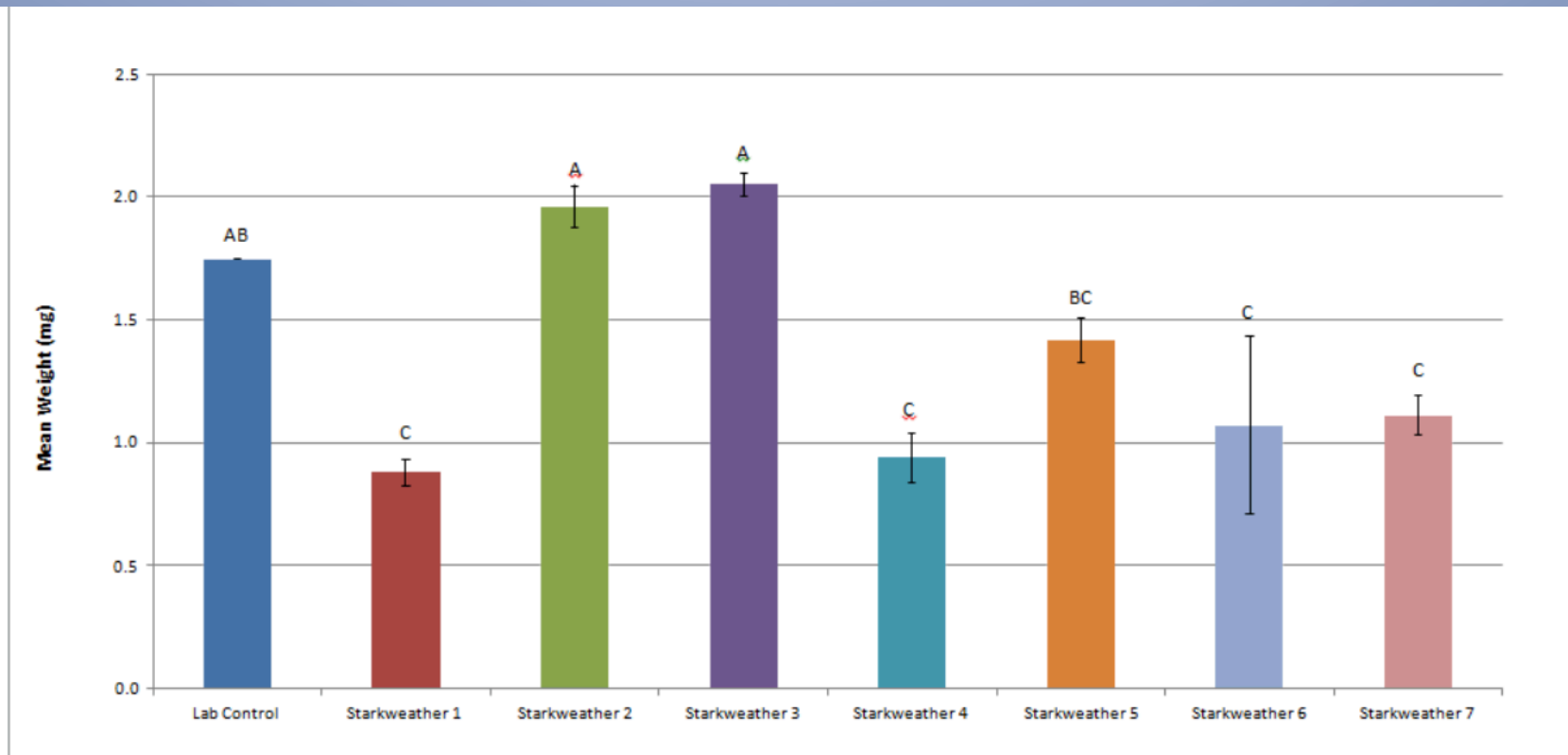


Figure 4. Ash-free dry weights of Chironomus dilutus exposed to laboratory control and Starkweather Creek sediment test samples. Histogram bars show standard errors. Histogram bars with the same letters above them do not have statistically-significant differences in organism survivorship.



Creek Monitoring Study

FreshWater
Engineering
Laura Rozumalski,
P.E.

www.freshwatereng.com





Study Conclusions

- Overall water quality has improved in all locations except “East Towne Mall” location
- Toxicity of concern in “Golf Course Ditch” location
- Improvement in “Airport” location but still an area of concern

Creek Monitoring Measuring depth



Creek Monitoring

Measuring water speed/flow



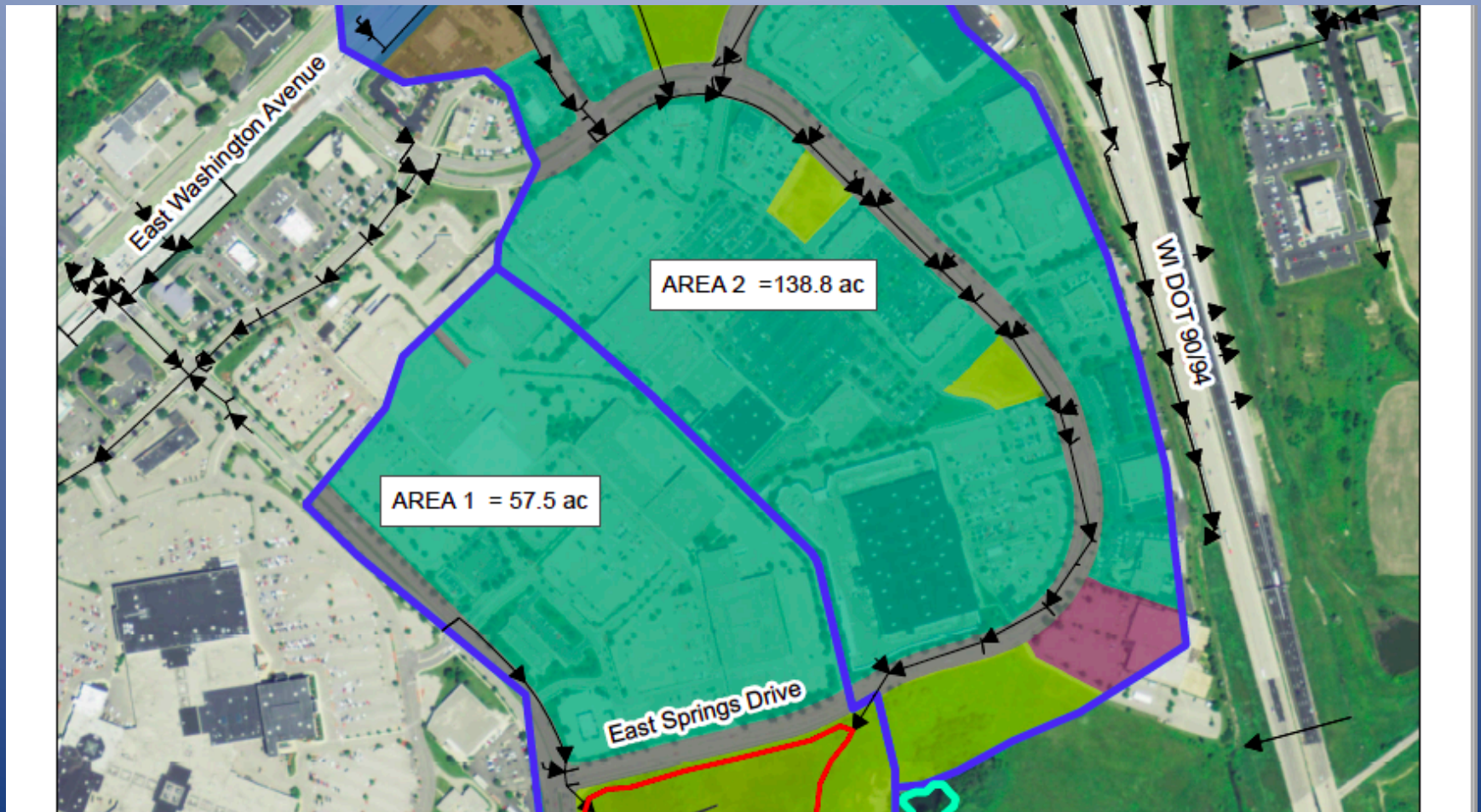
Creek Monitoring invertebrate identification



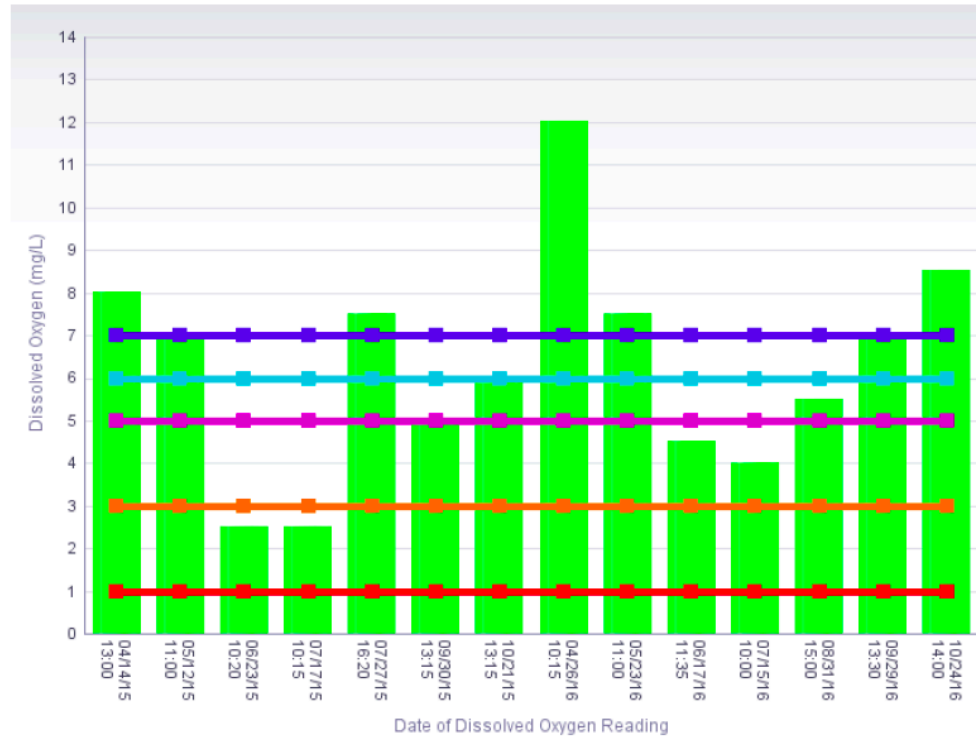
Creek Monitoring snails and mayfly larvae



Possible Future Project East Towne Drainage



Dissolved Oxygen is low



Measured Dissolved Oxygen

Standards

Coldwater Streams (spawning)

Coldwater Streams (CW)

Default / Warm Water Sport Fisheries (WWSF) / Warm Water Forage Fisheries (WWFF)

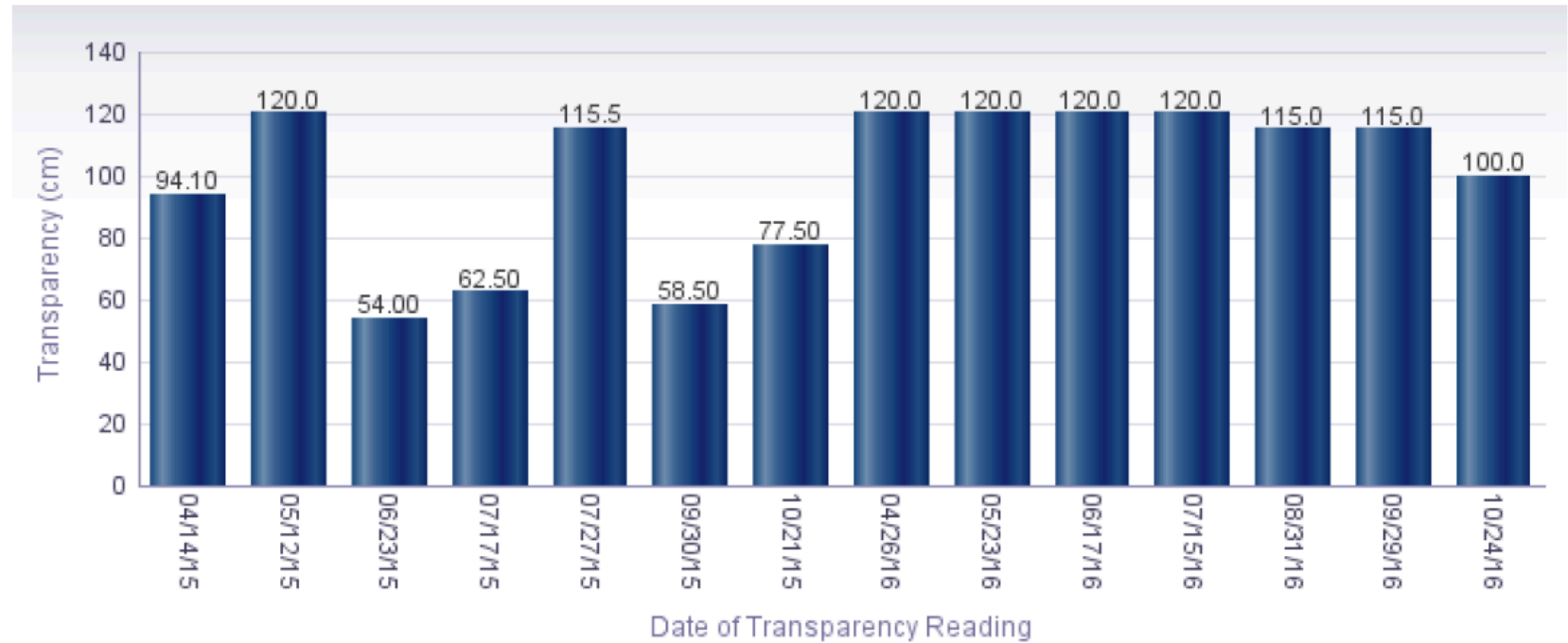
Limited Forage Fishery (LFF)

Limited Aquatic Life (LAL)

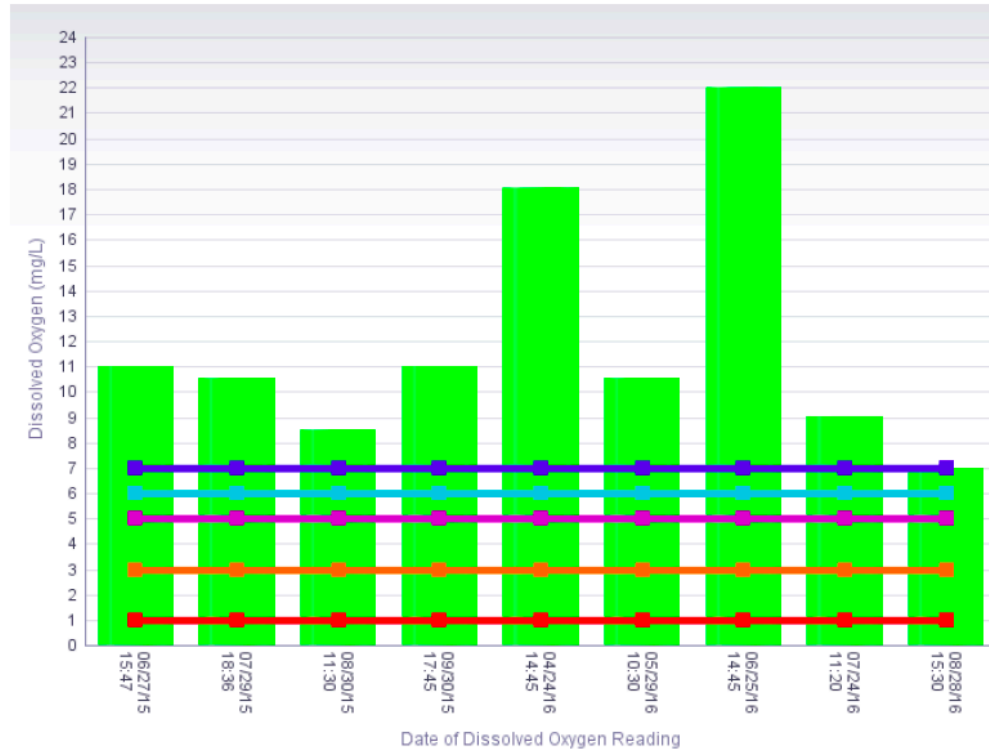
West Branch at Milwaukee St Bridge



Instantaneous transparency minimum: 54
Instantaneous transparency maximum: 120
Instantaneous transparency mean: 99.44
Instantaneous transparency median: 115



Bridge at Olbrich Site



Measured Dissolved Oxygen

Standards

— Coldwater Streams (spawning)

— Coldwater Streams (CW)

— Default / Warm Water Sport Fisheries (WWSF) / Warm Water Forage Fisheries (WWFF)

— Limited Forage Fishery (LFF)

— Limited Aquatic Life (LAL)

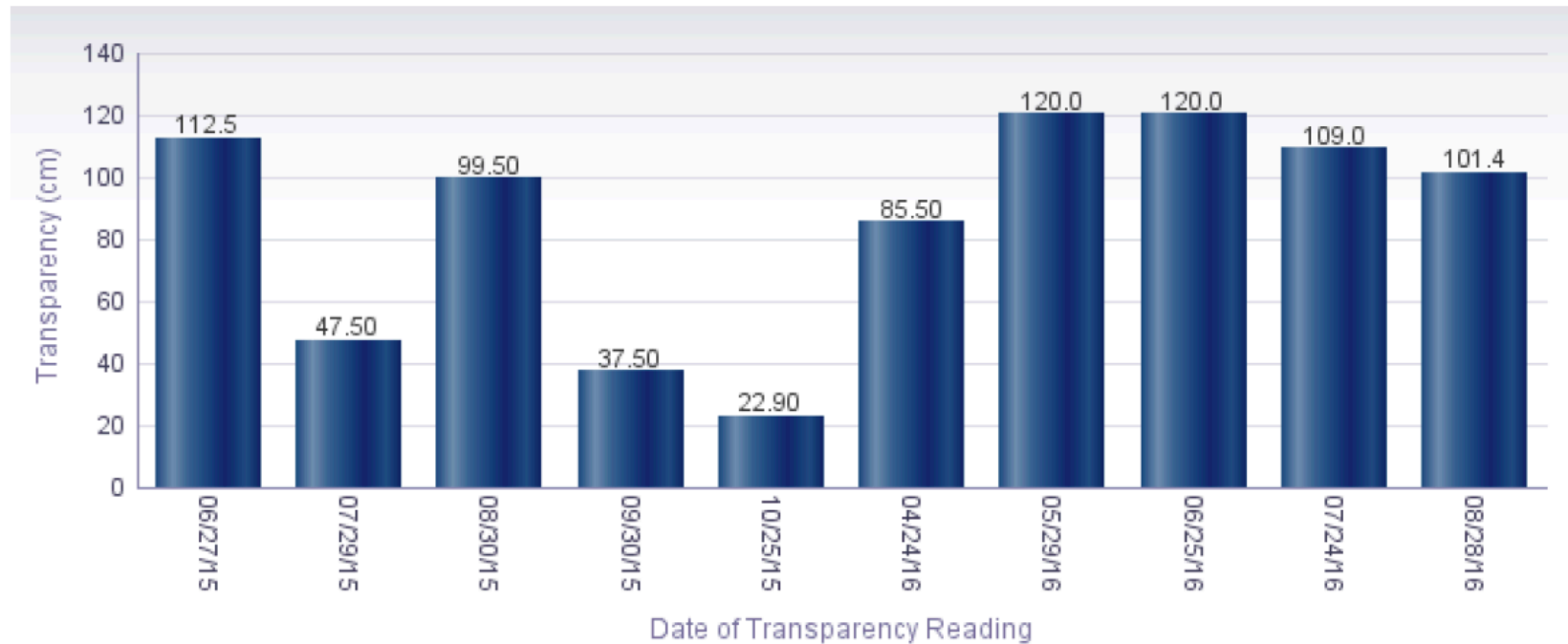
Bridge at Olbrich Site

Instantaneous transparency minimum: 22.9

Instantaneous transparency maximum: 120

Instantaneous transparency mean: 85.59

Instantaneous transparency median: 100.475



What's up next year?





Future Work Possibilities

FUN

- Connecting Kids with Nature
- MORE BOATS

STEWARDSHIP

- How much phosphorus is in the creek
- Working with the airport and golf course on sustainability practices
- Starkweather Treatment System
- Follow up on toxicity testing
- Creek navigability

COMMUNITY

- Garver Redevelopment
- Darbo Worthington Planning – native plantings, etc

FRIENDS OF STARKWEATHER CREEK

FINANCIAL REPORT 10/01/2017



INCOME

MEMBERSHIPS

19 memberships, including \$250 from City Engineering	742.00
---	--------

OTHER INCOME

GoFundMe and other donations for the canoe racks	444.00
--	--------

funding from Goodman CC for canoe racks and programming	710.00
---	--------

donations from attendees at AtwoodFest, Eken Park Festival	156.00
--	--------

other donations	175.00
-----------------	--------

TOTAL:	\$2,227.00
--------	------------

EXPENSES

ADMINISTRATIVE

room fees and meeting expenses	188.00
--------------------------------	--------

website expenses	224.00
------------------	--------

insurance premium	454.00
-------------------	--------

P.O. Box rental	90.00
-----------------	-------

annual state report filing fee	10.00
--------------------------------	-------

paypal transaction fees	16.00
-------------------------	-------

printing	76.00
----------	-------

ACTIVITIES

conference registrations	175.00
--------------------------	--------

to city for 1/2 of cost for constructing canoe racks at Olbrich	500.00
---	--------

2017 canoe storage rental fee	300.00
-------------------------------	--------

2017 AtwoodFest booth fee	165.00
---------------------------	--------

TOTAL:	\$2,198.00
--------	------------

NET INCOME	29.00
------------	-------

ACCOUNT BALANCES

CHECKING	739.50
----------	--------

	2,323.9
--	---------

SAVINGS	0
---------	---

	3,595.6
--	---------

CDs	4
-----	---

PAYPAL	456.73
--------	--------



Election of Officers

Current Board

- Dea Larsen Converse
- Lance Green
- Doug Johnson
- Carl Landsness
- Dave Pulkowski
- Dane Wudel*
- Paul Noeldner*
- Deborah Crabtree*
- Theresa Vander Woude
- Sean Gere

Re-election

- Dane Wudel
- Paul Noeldner
- Deborah Crabtree

Nominations

- Kris Long
-



Enjoy the Creek!



<http://starkweatherfriends.org/>



[https://www.facebook.com/
FriendsofStarkweatherCreek](https://www.facebook.com/FriendsofStarkweatherCreek)

